



Medway Street, Westminster
London SW1P

GARTON JONES.COM



Medway Street, Westminster
London, SW1P

GARTON JONES.COM

49 Marsham Street Sales +44 (0) 20 7340 0480
London westminster@gartonjones.com
SW1P 3DP www.gartonjones.com

£1,073 Per Week

HMO COMPLIANT- A well presented, bright three double bedroom apartment located on the ground of this modern development in the heart of Westminster. The property is offered furnished and has a dual aspect reception room with a separate modern integrated kitchen and access to two balconies, 2 bathrooms (one en-suite) and fantastic storage with fitted wardrobes to all of the bedrooms. Additionally there is a secure underground parking space, wood flooring and a daytime concierge. Ormond House is only moments from the River Thames and other London attractions such as the Houses of Parliament, Big Ben and The London Eye. It is extremely well placed for access to the transport links of St James' Park, Westminster and Victoria. The development is located close to the banks of the River Thames and is surrounded by an array of iconic London attractions as well as institutions like the Tate Gallery and Chelsea College of Arts. A plethora of hotels, eateries and retail shops which include The Goring, St Ermins', The Ivy Victoria, Timmy Green and Flight Club to name just a few. Garton Jones are based close by so are readily available for viewings.

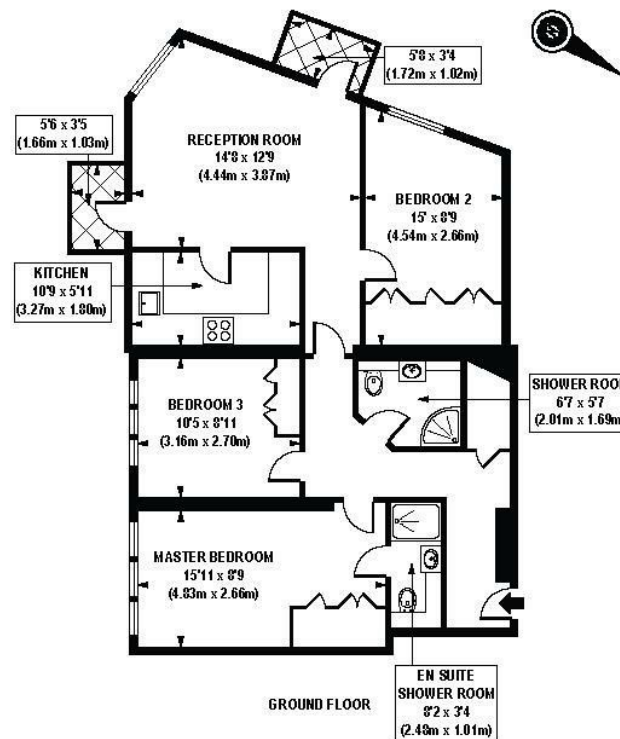
**Please note that the furniture may differ to that shown in the current photos

Council Tax Band G (London Borough of Westminster)
Minimum Term 6 Months
Deposit 6 Weeks
EPC Rating E (44)

- 3 Bedroom Apartment
- 833 Square Feet (77.40 Sq.M)
- Dual Aspect Reception Room
- Separate Integrated Kitchen
- 2 Private Balconies
- Day Concierge
- HMO Compliant So Suitable for Sharers
- Secure Underground Parking
- Close to Local Amenities Including Shops, Restaurants & Transport Links
- Walking Distance to St James Park & Westminster Station



EPC certificate available on request.



APPROX. GROSS INTERNAL FLOOR AREA 833 sq. ft / 77.40 sq. m

Floorplan is for illustrative purposes only and is not to scale.
Every attempt has been made to ensure the accuracy of the floorplan shown, however all measurements, fixtures, fittings and data shown are an approximate interpretation for illustrative purposes only.
Liability for errors, omissions or misstatements through negligence or otherwise is hereby excluded.

CPICREATIVE
Property Marketing

